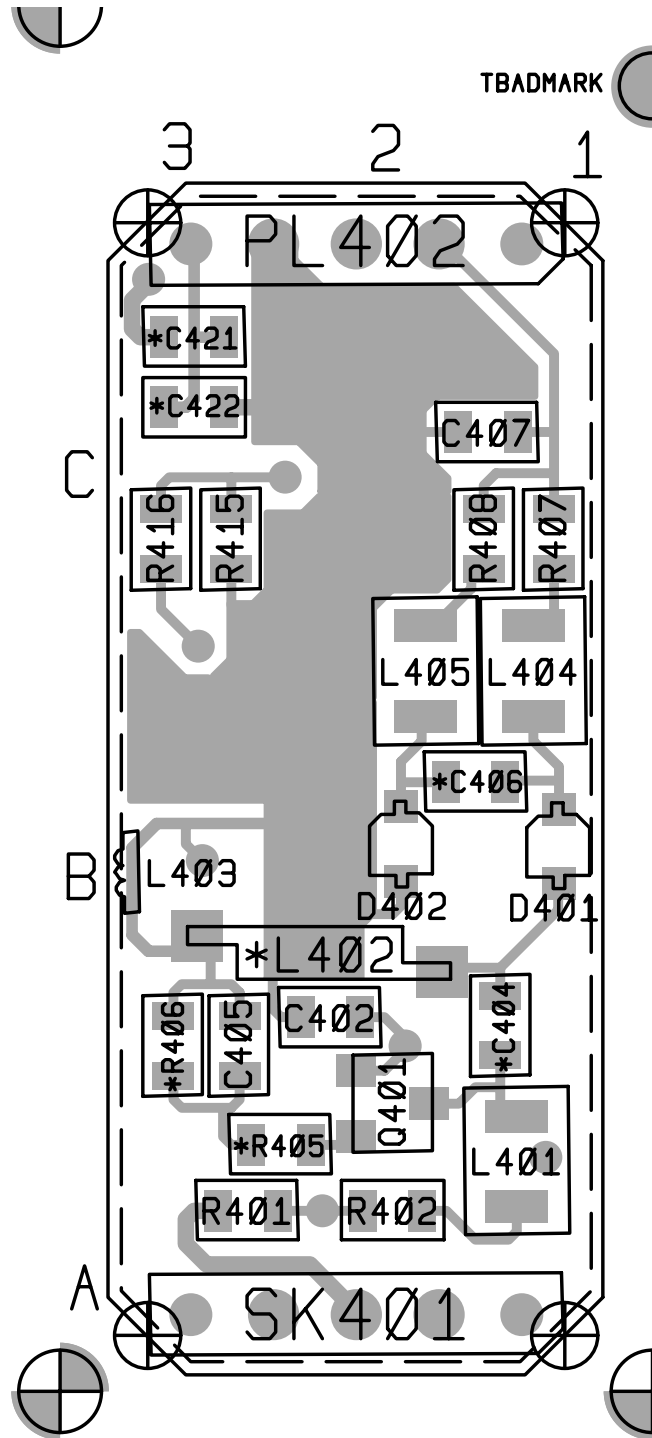


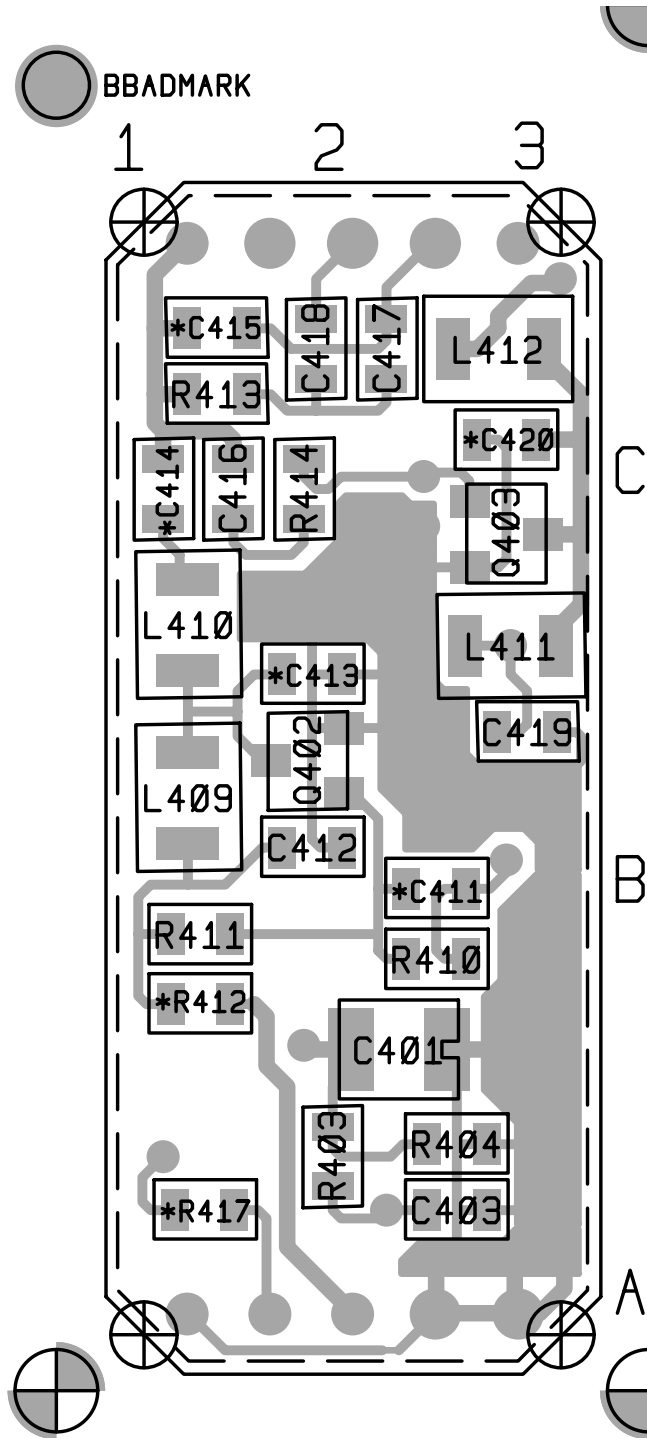
6.6 T3000-5000 VCO PCB

T3000-5000 VCO Parts List (IPN 220-01284-00)

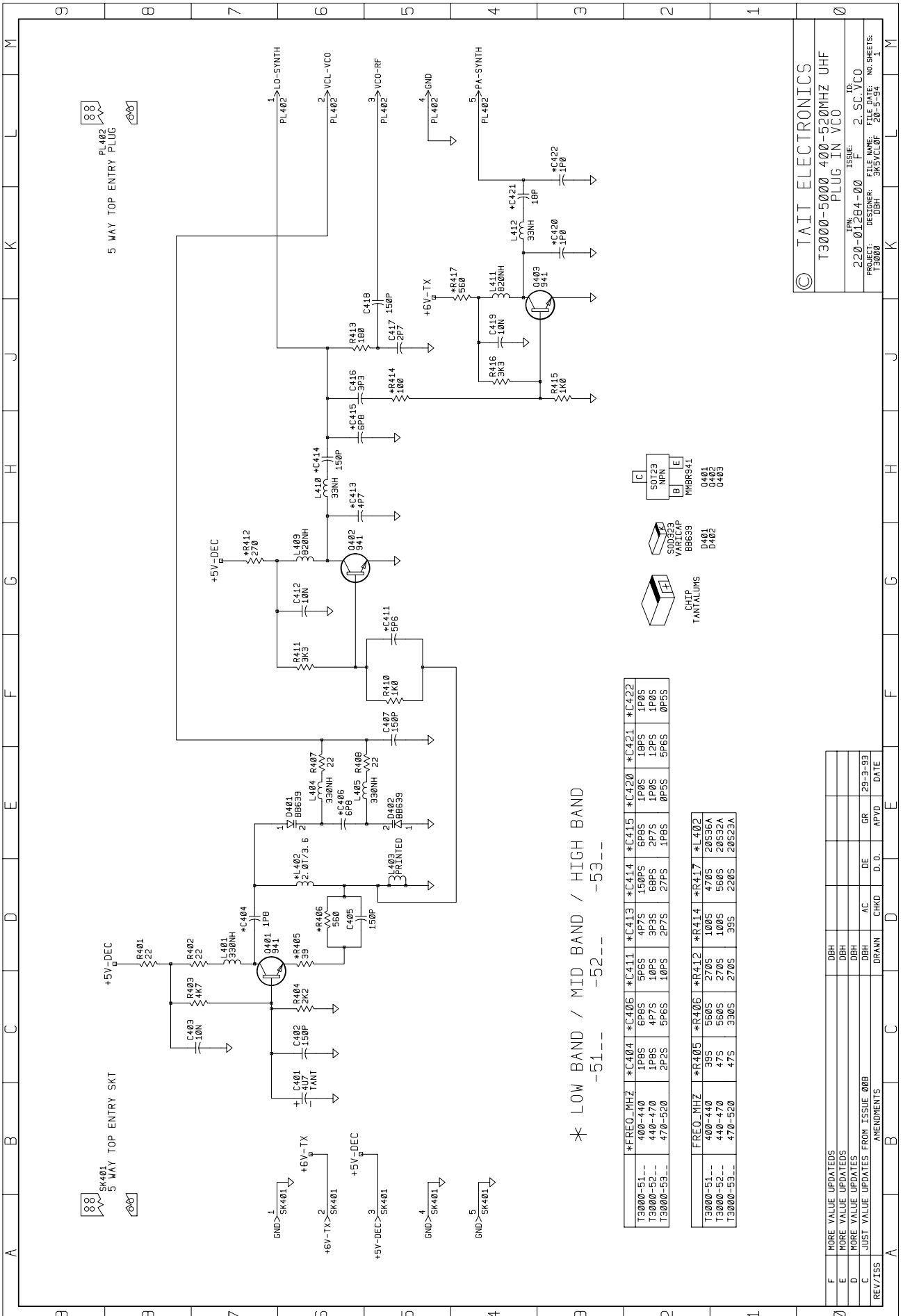
Ref	Var	IPN	Description	Ref	Var	IPN	Description
C401		014-07470-00	CAP TANT CHIP 4U7 3.5 X 2.8MM 267 SERIES	R413		036-13180-00	RES M/F 0805 CHIP 180E 5%
C402		015-23150-01	CAP CER 0805 CHIP 150P 5% NPO 50V	*R414	51XX	036-13100-00	RES M/F 0805 CHIP 100E 5%
C403		015-25100-08	CAP CER 0805 CHIP 10N 10% X7R 50V	*R414	52XX	036-13100-00	RES M/F 0805 CHIP 100E 5%
*C404	51XX	015-21180-01	CAP CER 0805 CHIP 1P8 +/-0.25 NPO 50	*R414	53XX	036-12390-00	RES M/F 0805 CHIP 39E 5%
*C404	52XX	015-21180-01	CAP CER 0805 CHIP 1P8 +/-0.25 NPO 50	R415		036-14100-00	RES M/F 0805 CHIP 1K 5%
*C404	53XX	015-21220-01	CAP CER 0805 CHIP 2P2 +/-0.25P NPO 5	R416		036-14330-00	RES M/F 0805 CHIP 3K3 5%
C405		015-23150-01	CAP CER 0805 CHIP 150P 5% NPO 50V	*R417	51XX	036-13470-00	RES M/F 0805 CHIP 470E 5%
*C406	51XX	015-21680-01	CAP CER 0805 CHIP 6P8 +/-0.25P NPO 5	*R417	52XX	036-13560-00	RES M/F 0805 CHIP 560E 5%
*C406	52XX	015-21560-01	CAP CER 0805 CHIP 5P6 +/-0.25P NPO 5	*R417	53XX	036-13220-00	RES M/F 0805 CHIP 220E 5%
*C406	53XX	015-21560-01	CAP CER 0805 CHIP 5P6 +/-0.25P NPO 5				
C407		015-23150-01	CAP CER 0805 CHIP 150P 5% NPO 50V	SK401		240-02010-91	CON 5WAY FEM LOW PROF SKT STRIP PCB MNT
*C411	51XX	015-21560-01	CAP CER 0805 CHIP 5P6 +/-0.25P NPO 5			220-01284-00	PCB T3000 UHF VCO
*C411	52XX	015-22100-01	CAP CER 0805 CHIP 10P +/-0.5P NPO 50				
*C411	53XX	015-22100-01	CAP CER 0805 CHIP 10P +/-0.5P NPO 50				
C412		015-25100-08	CAP CER 0805 CHIP 10N 10% X7R 50V	Note:			The first character in the variant column refers to frequency band and the second refers to frequency sub-band, as follows:
*C413	51XX	015-21470-01	CAP CER 0805 CHIP 4P7 +/-0.25P NPO 5		51XX	400-440MHz	
*C413	52XX	015-21330-01	CAP CER 0805 CHIP 3P3 +/-0.25P NPO 5		52XX	440-470MHz	
*C413	53XX	015-21270-01	CAP CER 0805 CHIP 2P7 +/-0.25P NPO 5		53XX	470-520MHz	
*C414	51XX	015-23150-01	CAP CER 0805 CHIP 150P 5% NPO 50V				
*C414	52XX	015-22680-01	CAP CER 0805 CHIP 68P 5% NPO 50V				
*C414	53XX	015-22270-01	CAP CER 0805 CHIP 27P 5% NPO 50V				
*C415	51XX	015-21680-01	CAP CER 0805 CHIP 6P8 +/-0.25P NPO 5				
*C415	52XX	015-21270-01	CAP CER 0805 CHIP 2P7 +/-0.25P NPO 5				
*C415	53XX	015-21180-01	CAP CER 0805 CHIP 1P8 +/-0.25 NPO 50				
C416		015-21330-01	CAP CER 0805 CHIP 3P3 +/-0.25P NPO 50V				
C417		015-21270-01	CAP CER 0805 CHIP 2P7 +/-0.25P NPO 50V				
C418		015-23150-01	CAP CER 0805 CHIP 150P 5% NPO 50V				
C419		015-25100-08	CAP CER 0805 CHIP 10N 10% X7R 50V				
*C420	51XX	015-21100-01	CAP CER 0805 CHIP 1P0 +/-0.25P NPO 5				
*C420	52XX	015-21100-01	CAP CER 0805 CHIP 1P0 +/-0.25P NPO 5				
*C420	53XX	015-20050-01	CAP CER 0805 CHIP 0P5 +/-0.5P NPO 50				
*C421	51XX	015-22180-01	CAP CER 0805 CHIP 18P 5% NPO 50V				
*C421	52XX	015-22120-01	CAP CER 0805 CHIP 12P 5% NPO 50V				
*C421	53XX	015-21560-01	CAP CER 0805 CHIP 5P6 +/-0.25P NPO 5				
*C422	51XX	015-21100-01	CAP CER 0805 CHIP 1P0 +/-0.25P NPO 5				
*C422	52XX	015-21100-01	CAP CER 0805 CHIP 1P0 +/-0.25P NPO 5				
*C422	53XX	015-20050-01	CAP CER 0805 CHIP 0P5 +/-0.5P NPO 50				
D401		001-10006-39	(S) DIODE SMD VARICAP BB639 SOD323				
D402		001-10006-39	(S) DIODE SMD VARICAP BB639 SOD323				
L401		056-10330-00	IND FXD SMD 330NH 3.2*2.5*1.6 SIEMENS SMI				
*L402	51XX	052-56335-20	COIL A/W 2.0T/3.5MM SMD 0.56MM WIRE				
*L402	52XX	052-56332-20	COIL A/W 2.0T/3.2MM SMD 0.56 WIRE				
*L402	53XX	052-56323-20	COIL A/W 2.0T/2.3MM SMD 0.56 WIRE				
L404		056-10330-00	IND FXD SMD 330NH 3.2*2.5*1.6 SIEMENS SMI				
L405		056-10330-00	IND FXD SMD 330NH 3.2*2.5*1.6 SIEMENS SMI				
L409		056-10820-00	IND FXD SMD 820NH 3.2*2.5*1.6 SIEMENS SMI				
L410		056-10033-00	IND FXD SMD 33NH 3.2*2.5*1.6 SIEMENS SMID				
L411		056-10820-00	IND FXD SMD 820NH 3.2*2.5*1.6 SIEMENS SMI				
L412		056-10033-00	IND FXD SMD 33NH 3.2*2.5*1.6 SIEMENS SMID				
PL402		240-00026-27	CONN 5WAY MALE INTERCON STRIP PCB MN				
Q401		000-10009-41	(S) XSTR SMD MMBR941L RF LOW NOISE SOT23				
Q402		000-10009-41	(S) XSTR SMD MMBR941L RF LOW NOISE SOT23				
Q403		000-10009-41	(S) XSTR SMD MMBR941L RF LOW NOISE SOT23				
R401		036-12220-00	RES M/F 0805 CHIP 22E 5%				
R402		036-12220-00	RES M/F 0805 CHIP 22E 5%				
R403		036-14470-00	RES M/F 0805 CHIP 4K7 5%				
R404		036-14220-00	RES M/F 0805 CHIP 2K2 5%				
*R405	51XX	036-12390-00	RES M/F 0805 CHIP 39E 5%				
*R405	52XX	036-12470-00	RES M/F 0805 CHIP 47E 5%				
*R405	53XX	036-12470-00	RES M/F 0805 CHIP 47E 5%				
*R406	51XX	036-13560-00	RES M/F 0805 CHIP 560E 5%				
*R406	52XX	036-13560-00	RES M/F 0805 CHIP 560E 5%				
*R406	53XX	036-13330-00	RES M/F 0805 CHIP 330E 5%				
R407		036-12220-00	RES M/F 0805 CHIP 22E 5%				
R408		036-12220-00	RES M/F 0805 CHIP 22E 5%				
R410		036-14100-00	RES M/F 0805 CHIP 1K 5%				
R411		036-14330-00	RES M/F 0805 CHIP 3K3 5%				
*R412	51XX	036-13270-00	RES M/F 0805 CHIP 270E 5%				
*R412	52XX	036-13270-00	RES M/F 0805 CHIP 270E 5%				
*R412	53XX	036-13270-00	RES M/F 0805 CHIP 270E 5%				



T3000-5000 VCO PCB (IPN 220-01284-00) - Top Side



T3000-5000 VCO PCB (IPN 220-01284-00) - Bottom Side



* LOW BAND / MID BAND / HIGH BAND
-51-- -52-- -53--

REV/ISS	AMENDMENTS	CHKD	D. O.	APVD	DATE
F	MORE VALUE UPDATES		DBH		
E	MORE VALUE UPDATES		DBH		
D	MORE VALUE UPDATES		DBH		
C	JUST VALUE UPDATES FROM ISSUE 00B		AC	DE	GR 25-3-93

© TAIT ELECTRONICS
T3000-5000 400-520MHZ UHF
PLUG IN VCO
REV: 2 SC VCO
200-01284-00
PROJECT: DESIGNER: 3K5V/CL0F
T3000 MBR941
NO. SHEETS: 1

